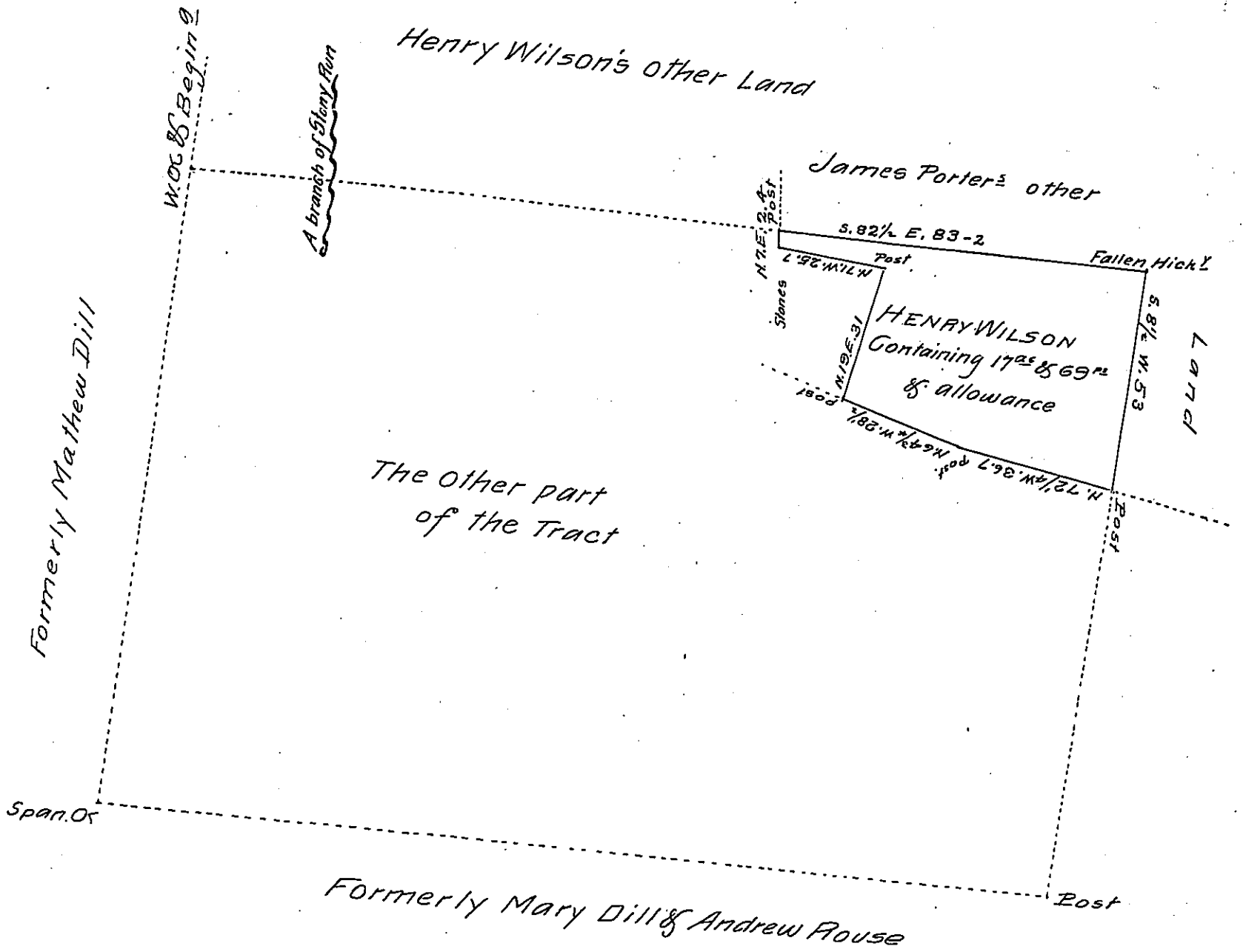


FORM NO 1.



Situate part in Manahan and part in Franklin Township in the County of York (late part of the County of Lancaster.) containing within the black lines as above set forth 17²⁵ & 69^{ac} & allowance. Being part of a larger Tract of 190^{ac} & 35^{ac} and allowance which was originally surveyed by Thomas Armor late D.S. under George Stevenson late D.S. in pursuance of a Warrant for 100^{ac} granted to Henry Wilson bearing date the 22^d day of October A.D. 1742.

Resurveyed and divided off from the said larger tract of land the 3^d day of February 1821. at the request of James Porter the present owner.

Peter Spangler D.S.

To Jacob Spangler Esquire
Surveyor General Harrisburg Pa.

IN TESTIMONY that the above is a copy of the original remaining on file in the Department of Internal Affairs of Pennsylvania, made conformably to an Act of Assembly approved the 16th day of February, 1833, I have hereunto set my Hand and caused the Seal of said Department to be affixed at Harrisburg, this second day of JULY 1907

Henry Howell
Secretary of Internal Affairs.